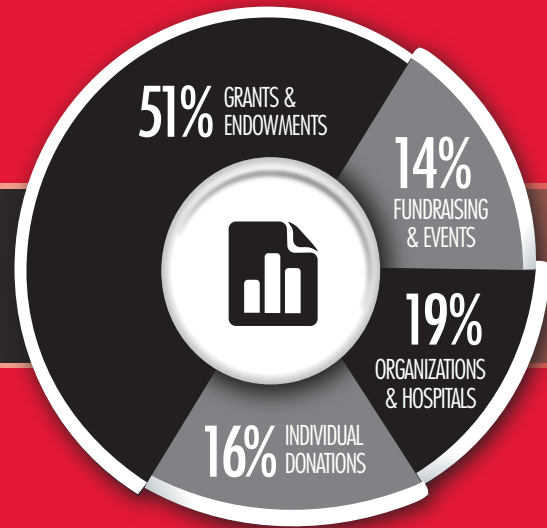
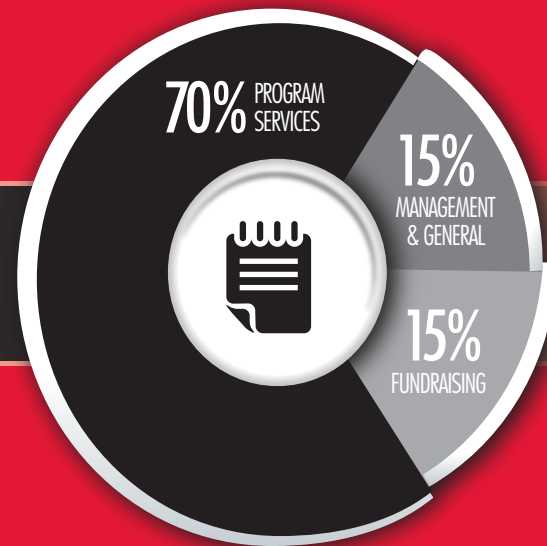


# INCOME & EXPENSES

## OPERATING INCOME



## OPERATING EXPENSES



# 2013 HOSPITAL HOSPITALITY HOUSE BOARD OF DIRECTORS

## EXECUTIVE COMMITTEE

President - Daniel Liehr

1st Vice President & Treasurer - Erin M. Gallagher, CPA

Assistant Treasurer - Dennis Conley

Secretary - Cindy Mein

### Committee Chairs

Lisa Batsell

Lisa Carriveau

Jo De Nooyer

Kara Kuchinic

Sarah Torrence

## MEMBERS AT LARGE

Michelle Shepherd Denny

Susan L. Doan

Michael A. Dombos

Chiquita Elmore-Barbee

Mary Heintzkill

Kara L. Hoorn

Katharine Howland

Julie Maleitzke

Carole Mendez

Meredith L. Pratt

Sandy Roethler

Cathy Staples

Tina E. Sullivan

Peter F. Tanz

John M. Van Stratt

Sue Wakefield

Cheryl A. Warren

Rick Wordell

## EX OFFICIO

Judy Markusse Paget, Executive Director

Eric Buzzell, Past President



**Hospital Hospitality House**  
of Southwest Michigan

527 W. South St., Kalamazoo, MI 49007  
(269) 341-7811 • www.hhhkz.org

# The Year IN REVIEW

2013

Greetings from the Hospital Hospitality House of Southwest Michigan. We are pleased to be able to share with you a snapshot of our year 2013. You will notice that this year we are sending out a more streamlined "annual report" – hitting the key highlights of the year in a more visual format. We believe it is time to make the change to a more economical and "greener" way to tell you about our year. For more information about the House, our work, our finances, and how to make a gift, please visit our website at [hhkz.org](http://hhkz.org). Or call us at 269.341.7811.

When you are finished with this report, kindly recycle it or pass it on to a friend or colleague to further tell our story.

We thank you for your continued commitment and support of our House.



**Daniel Liehr**  
Board President

In Hospitality,



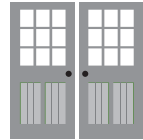
**Hospital Hospitality House**  
of Southwest Michigan



**Judy Markusse Paget**  
Executive Director

HOSPITAL HOSPITALITY HOUSE -  
**BY THE NUMBERS**

**1985**  
 IS WHEN WE OPENED  
 OUR DOORS



AT THEIR BEDSIDE  
**29,200**  
 GUESTS OVER TIME STAYING AT THE HOUSE  
 and supporting a hospitalized loved one.



**3,449**  
 GUEST NIGHTS IN 2013

**85%**  
 OF OUR GUESTS WERE FROM MICHIGAN  
 While the remainder have been from 50 states  
 and 24 countries.



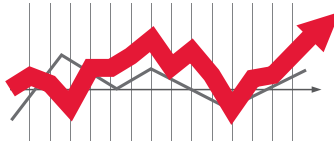
**96%**  
 WERE REFERRALS FROM  
 BORGESS & BRONSON



**4.5**  
 DAYS WAS THE AVERAGE  
 LENGTH OF A STAY



**\$71,845**  
 IN DONATIONS FROM 557 INDIVIDUALS



**99%**  
 EXCELLENT OR GOOD  
 RATING FROM GUESTS



**35%**  
 OF OUR GUESTS  
 WERE PARENTS  
 With babies in the  
 Neonatal Intensive  
 Care Unit.



TASTING ON THE TOWN  
**2013 SPONSORS**

106.5 FM WVFM

Advanced Allergy and Asthma Care –  
 Michael Park, MD

Advanced Radiology Services, PC –  
 Kalamazoo Division

Anonymous Donor

BDO USA, LLP

Biggs-Gilmore

Borgess

Borgess Surgical Specialties

Bronson Healthcare

Robert & Melissa Brown

Burnham & Flower Insurance Group

Cereal City Pediatrics

Chemical Bank

Crothall Healthcare

CSM Group, Inc.

Design Details

Diekema Hamann Architecture +  
 Engineering

Digital Highway

Richard & Kathy Dirrenberger

Dave & Sue Doan

Kent Dolbee & Kara Hoorn

Eckert Wordell

Larry & Samantha Gignac

Henry B. & Mary Jo Hawk

Hillside Center

Honigman Miller Schwartz and Cohn, LLP

Honoré Salon

John & Jane Hoogerheide

Dr. Dennis & Kathy Hoorn

The Hospitalist and PICU Physicians at  
 Bronson Children's Hospital

Dick & Kathy Howland

JMD Real Estate Holdings/Shelly Denny

Just Good Food

Kalamazoo Anesthesiology, PC

Kalamazoo/Battle Creek  
 International Airport

Kalamazoo Knit and Crochet Meetup

Kara Kuchinic & Sarah Torrence,  
 Tasting on the Town Co-Chairs

Lambrix Design and Company

Daniel Liehr – Ameriprise Financial

Lillibridge Healthcare Services

Mall City Mechanical

Metro Toyota – DeNooyer Chevrolet

Miller-Davis Company

Miller Energy Company

MOL-SON, LLC

Morgan Stanley Wealth Management

Naylor Landscape Management

Neurosurgery of Kalamazoo

Pakkers, Inc.

Physical Therapy ONE

PNC Bank

Joyce A. Vos –  
 Prudential Preferred Realtors

Rathco Safety Supply, Inc.

Jeffrey J. Riggs, DDS

Schupan & Sons, Inc.

John Schuring, Jr. Company

Seber Tans, PLC

The Mike & Sharon Seelye Family

Siegfried Crandall, PC

Southwestern Michigan  
 Neonatology, PC

Mark & Cathy Staples

Tiffany's Wine & Spirits

Treystar

UnitedHealthcare

Henry & Martha Upjohn

Veritas Law Group

Wakefield and Associates

Guy Walter & Tina Sullivan

Cheryl A. Warren

Nick Yetter –  
 Wells Fargo Advisors

John Denny –  
 Wells Fargo Home Mortgage

Wester Dental Care, PC

Western Diversified Plastics, LLC

The WSJ Group, Merrill Lynch  
 Wealth Management

